

**To be removed by vehicle owners only and placed with owners manual.**



## Soft Tonneau Cover

### USE, CARE AND MAINTENANCE

#### About Your Product

This tonneau cover has been designed to be the very best available. With proper care, your tonneau cover will provide years of stylish looks and maximum protection.

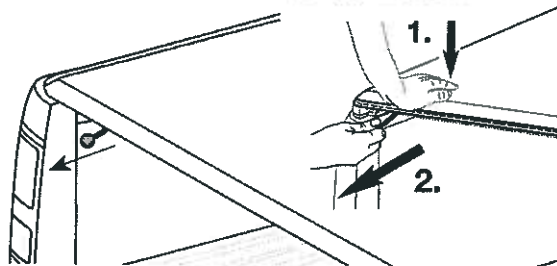
#### Care And Maintenance

Clean vinyl cover with mild soap and water. If necessary, use a soft bristle brush to remove dirt trapped in grain of material. Thoroughly rinse cover to remove any soap residue. Cover can be treated with any vinyl protectant made for tonneau covers.

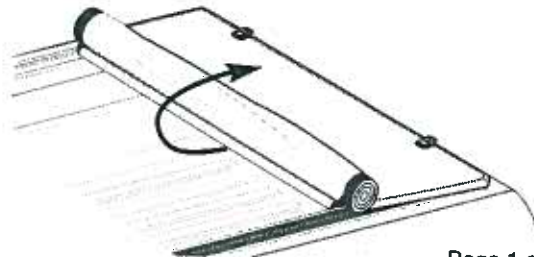
**Never use silicon, petroleum, or citrus based products on your tonneau cover.**

#### Secure Cover Into The Open Position

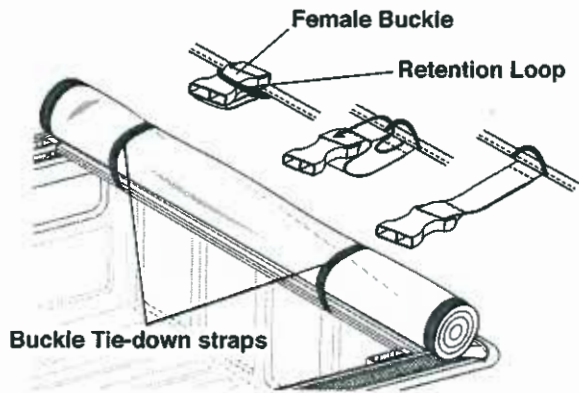
1. To open cover, open tailgate and push down on cover (1), then pull back on pull cord (2).



2. From the driver's side, roll the cover up tightly.



3. Once the cover is rolled up, remove female buckles from under retention loops and engage both tie-down straps. Pull both strap tight.



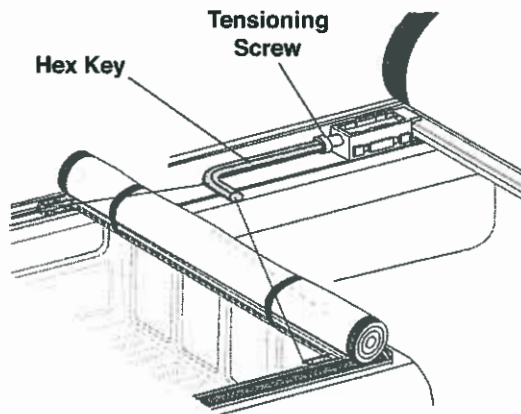
**WARNING:** Always secure the cover with tie-down straps when driving to avoid damage to tonneau system.

**NOTE:** Female buckle ends should be stowed under retention loops when not in use.

### Cover Adjustment

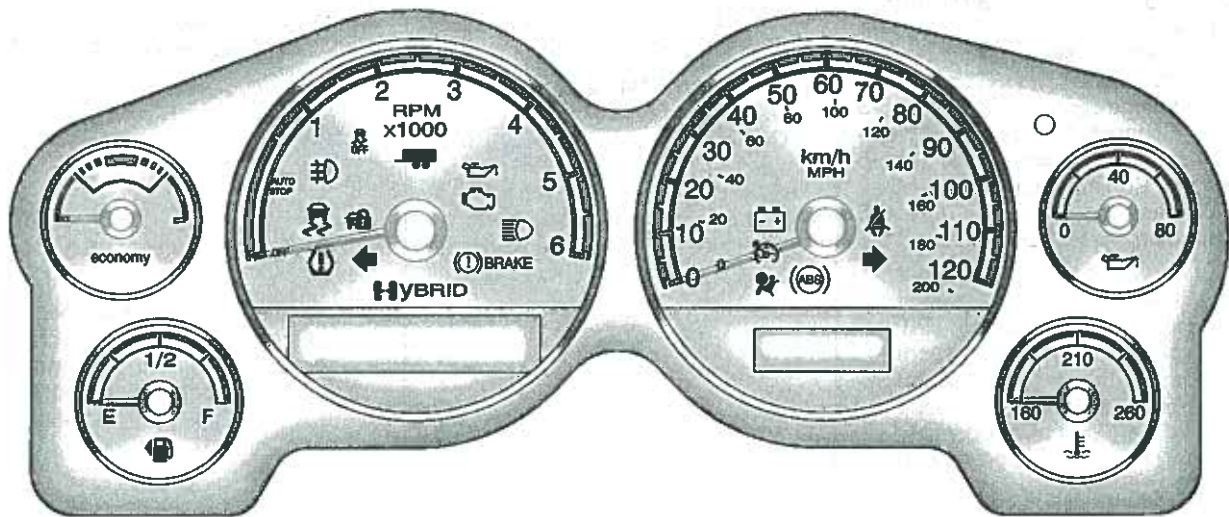
1. Your tonneau is equipped with a tensioning system for different types of weather conditions. If cover becomes too tight during operation, simply turn tensioning screw counter clockwise to loosen or clockwise to tighten the tension on cover. The screw can be turned using a 1/4" Hex key. *In Glove Box.*

**NOTE:** Be sure adjusted screws on both sides to the same tension.



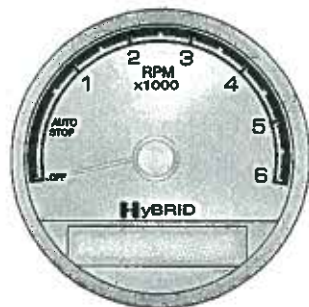
## Warning Lights, Gauges, and Indicators

### Instrument Cluster



English Version Shown, Metric Similar

## Tachometer



English Version Shown,  
Metric Similar

When the ignition is in ON/RUN, the tachometer indicates the vehicle status.

When pointing to AUTO STOP, the vehicle is on and can move. the engine could AUTO START at any time. when the indicator is OFF, the vehicle is off. when the engine is on, the tachometer will indicate the engine's revolutions per minute (rpm).

The tachometer may vary by several hundred rpm's, during AUTO STOP mode, when the engine is shutting off and restarting. A slight bump may be felt when the transmission is determining the most fuel efficient operating range.

## Fuel Gauge



Metric



English

When the ignition is on, the fuel gauge shows approximately how much fuel is left in the fuel tank. An arrow on the fuel gauge indicates the side of the vehicle the fuel door is on. The gauge first indicates E (empty) before the vehicle is out of fuel, but the vehicle should be refueled as soon as possible.

## 5-4 Instruments and Controls

Listed are four situations that may occur with the fuel gauge, none of these indicate a problem:

- At the gas station, the fuel pump shuts off before the gauge reads F (full).
- It takes a little more or less fuel to fill up than the fuel gauge indicated. For example, the gauge may have indicated the tank was half full, but it actually took a little more or less than half the tank's capacity to fill the tank.
- The gauge moves a little while turning a corner or while accelerating.
- The gauge does not go back to E (empty) when the ignition is turned off.

### Fuel Economy Gauge



**Metric**



**English**

This gauge is to assist in driving efficiently and may vary during normal operation.

the vehicle is being driven the most efficient when the gauge is kept in the middle.

The gauge moves to the left when braking and to the right when accelerating. When either are done aggressively, the efficiency is decreased.

## Engine Oil Pressure Gauge



Metric



English

The oil pressure gauge shows the engine oil pressure in psi (pounds per square inch) when the engine is running. Canadian vehicles indicate pressure in kPa (kilopascals). The oil pressure gauge will read zero when operating in the AUTO STOP mode.

Oil pressure should be 200 to 550 kPa (29 to 80 psi). In certain situations, such as long extended idles on hot days, it could read as low as 105 kPa (15 psi) and still be considered normal.

When the engine is running readings in the low pressure zone may be caused by a dangerously low oil level or some other problems causing low oil pressure. Check the oil as soon as possible.

### WARNING

Do not keep driving if the oil pressure is low. The engine can become so hot that it catches fire. Someone could be burned. Check the oil as soon as possible and have the vehicle serviced.

**Notice:** Lack of proper engine oil maintenance can damage the engine. The repairs would not be covered by the vehicle warranty. Always follow the maintenance schedule for changing engine oil.

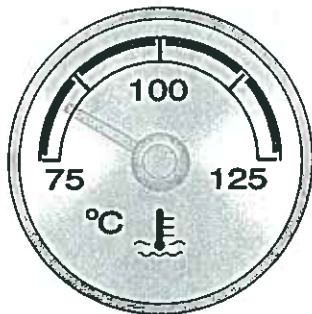
### AUTO STOP

When the engine is in AUTO STOP mode, the oil pressure gauge drops to zero. Oil pressure returns to the normal operating range after the engine starts.

See *Starting the Vehicle on page 9-2* for more information.

AUTO STOP displays in the Driver Information Center (DIC) when the vehicle speed is zero. See *Driver Information Center (DIC) on page 5-10* for more information.

### Engine Coolant Temperature Gauge



Metric



English

This gauge shows the engine coolant temperature.

It also provides an indicator of how hard the vehicle is working. During a majority of the operation, the gauge reads 100°C (210°F) or less. If a load is being pulled or going up hills, it is normal for the temperature to fluctuate and go over the 113°C (235°F) mark. However, if the gauge reaches the 125°C (260°F) mark, it indicates that the cooling system is working beyond its capacity.

## Charging System Light



This 12-volt battery light comes on briefly when the ignition is turned to ON/RUN, but the engine is not running, as a check to show it is working.

It should go out once the engine has been started. If it stays on, or comes on while driving, there could be a problem with the 12-volt charging system. Have the vehicle serviced by your dealer. A 12-volt

charging system Driver Information Center (DIC) message may also appear. See *Driver Information Center (DIC) on page 5-10* for more information. This light could indicate that there are electrical problems. Have it checked right away. If a short distance must be driven with the light on, be certain to turn off all the accessories.

## Brake System Warning Light

With the ignition in ON/RUN, the brake system warning light comes on when the parking brake is set. If the vehicle is driven with the parking brake engaged, a chime sounds when the vehicle speed is greater than 8 km/h (5 mph).

The vehicle brake system consists of two hydraulic circuits. If one circuit is not working, the remaining circuit can still work to stop the vehicle. For normal braking performance, both circuits need to be working.

If the warning light comes on and a chime sounds there could be a brake problem. Have the brake system inspected right away.

This light also comes on due to low brake fluid. See the owner manual for more information.





Metric



English

BRAKE

This light should come on briefly when the ignition key is turned to ON/RUN. If it does not come on then, have it fixed so it will be ready to warn if there is a problem.

**⚠ WARNING**

The brake system might not be working properly if the brake system warning light is on. Driving with the brake system warning light on can lead to a crash. If the light is still on after the vehicle has been pulled off the road and carefully stopped, have the vehicle towed for service.

If the light comes on while driving, pull off the road and stop carefully. The pedal might be harder to push or can go closer to the floor. It may take longer to stop. If the light does not go out, have the vehicle towed for service. See *General Towing Information on page 9-9*.

### Antilock Brake System (ABS) Warning Light



For vehicles with the Antilock Brake System (ABS), this light comes on briefly when the engine is in ON/RUN.

That is normal. If the light does not come on then, have it fixed so it will be ready to warn if there is a problem.

If the ABS light stays on, turn the ignition off, if the light comes on while driving, stop as soon as it is safely possible and turn the ignition off. Then start the engine again to reset the system. If the ABS light still stays on, or comes on again while driving, the vehicle needs service. If the regular brake system warning light is not on, the vehicle still has brakes, but not antilock brakes. If the regular brake system warning light is also on, the vehicle does not have antilock brakes and there is a problem with the regular brakes. See *Brake System Warning Light on page 5-7*.

For vehicles with a Driver Information Center (DIC), see *Driver Information Center (DIC) on page 5-10* for all brake related DIC messages.

## StabiliTrak® OFF Light



This light comes on briefly when the ignition is in ON/RUN.

If it does not, have the vehicle serviced by your dealer. If the system is working normally, the indicator light then goes off.

Press and release the Traction Control System (TCS)/StabiliTrak button to turn off TCS, and a message displays in the DIC.

Press and briefly hold the TCS/StabiliTrak button to turn off the StabiliTrak system; the StabiliTrak OFF light comes on and a message appears in the Driver Information Center (DIC).

If the StabiliTrak/TCS system is off, the system does not assist in controlling the vehicle. Turn on the StabiliTrak/TCS system and the indicator light turns off.

See the owner manual for more information.

## Traction Control System (TCS)/StabiliTrak® Light



The Traction Control System (TCS)/StabiliTrak light comes on briefly when the engine is in ON/RUN.

If the light does not come on or stays on, have the vehicle serviced by the dealer. If the system is working normally, the indicator light turns off.

If the light comes on and stays on while driving, and a message displays in the Driver Information Center (DIC), have the vehicle serviced by the dealer. See Ride Control System Messages for more information.

If the light flashes while driving, this means that the StabiliTrak or the TCS is assisting in controlling the vehicle.

See the owner manual for more information.

### Engine Oil Pressure Light

#### **WARNING**

Do not keep driving if the oil pressure is low. The engine can become so hot that it catches fire. Someone could be burned. Check the oil as soon as possible and have the vehicle serviced.

**Notice:** Lack of proper engine oil maintenance can damage the engine. The repairs would not be covered by the vehicle warranty. Always follow the maintenance schedule for changing engine oil.



This light comes on briefly as a check it works, when the ignition is in ON/RUN. If it does not, have the vehicle serviced.

If the light comes on and stays on, it means that oil is not flowing through the engine properly. The vehicle could be low on oil and might have some other system problem.

During an Auto Stop there is zero oil pressure, but this light will not come on.

### Information Displays

#### Driver Information Center (DIC)

##### Trip/Fuel Menu Items

Press the trip/fuel button to display the Trip/Fuel Menu items. For more items see "Driver Information Center (DIC)" in the owner manual.

##### BATTERY VOLTAGE

This display shows the current battery voltage. If the voltage is in the normal range, the value will display. For example, the display may read BATTERY VOLTAGE 13 VOLTS. Your vehicle's charging system regulates voltage based on the state of the battery.

The battery voltage may fluctuate when viewing this information on the DIC. This is normal. See "Charging System Light" in the owner manual for more information. If there is a problem with the battery charging system, the DIC will display a message. See *Battery Voltage and Charging Messages on page 5-11*.

### **INST ECON (Instantaneous Economy)**

This display normally shows instantaneous fuel economy. When the vehicle is in Auto Stop mode AUTO STOP or IFE = 0 L/100km or IFE = 99 MPG will be displayed. See *Starting the Vehicle on page 9-2* for more information.

## **Vehicle Messages**

Messages displayed on the DIC indicate the status of the vehicle or some action may be needed to correct a condition. Multiple messages may appear one after another.

The messages that do not require immediate action can be acknowledged and cleared by pressing ✓ (Set/Reset).

The messages that require immediate action cannot be cleared until that action is performed.

All messages should be taken seriously. Clearing the message does not correct the problem.

The following are the possible messages for the Hybrid and some information about them. For information on other DIC messages, see "Vehicle Messages" in the owner manual.

## **Battery Voltage and Charging Messages**

### **SERVICE BATTERY CHARGING SYSTEM**

If the 12-volt battery system faults or fails this message will appear on the DIC. The battery/charging system light will appear in the instrument panel cluster. See "Battery Warning Light" in the owner manual. Driving with this message on could drain the battery. Have the electrical system checked as soon as possible.

## **Brake System Messages**

### **SERVICE BRAKE SYSTEM**

This message will be displayed if there is a problem with the brake system. You will still be able to brake, but it will be noticeably more difficult. Pull off the road to a safe location and have your vehicle towed to the nearest dealer for service. See "Brakes," "Brake System Warning Light," and "ABS Brake System Warning Light" in the owner manual.

## **Door Ajar Messages**

### **HOOD OPEN**

If the hood is not fully closed or there is a problem with the hood switch, this message will be displayed. Close the hood to clear the message. If the HOOD OPEN message continues to be displayed after verifying the hood is closed,

you should have the hood switch serviced. Failure to service the hood switch properly can result in an Auto Start condition.

Auto Stops will be disabled when this message is displayed. If the vehicle is in Auto Stop mode when this message appears, the engine will instantly start.

## **Engine Oil Messages**

### **OIL PRESSURE LOW STOP ENGINE**

If engine oil pressure is low, this message will be displayed on the DIC. Stop the vehicle as soon as safely possible and do not operate it until the cause of the low oil pressure has been corrected. Check your oil level as soon as possible and have your vehicle serviced. See "Engine Oil" in the owner manual.

## **Service Vehicle Messages**

### **SERVICE HYBRID SYSTEM**

If this message is displayed on the DIC, the vehicle may continue to operate, but you need to have it serviced as soon as possible.

### **SERVICE POWER STEERING**

This message displays if a problem has been detected with the electric power steering. Have your vehicle serviced by your dealer immediately.

# Infotainment System

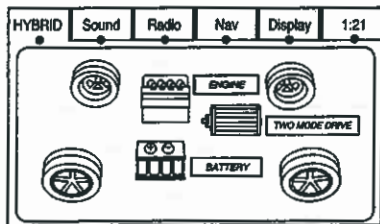
## Introduction

Infotainment ..... 7-1

## Introduction

### Infotainment

For vehicles with a navigation radio system, see the Navigation System manual for more information.



To view the hybrid screen, press the MENU button on the radio. The hybrid screen displays when entering the Configuration Menu.

The display shows:

- Auto Stop
- Battery Charging
- Engine Idle
- Two-Wheel and Four-Wheel Drive Modes for:
  - Engine Power
  - Battery Power
  - Hybrid Power